

Model:GT-78-52

Size

Diameter: 78mm

Height: 45mm

Edge thickness: 4mm

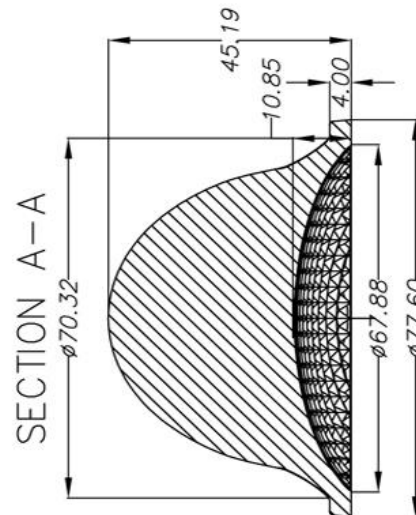
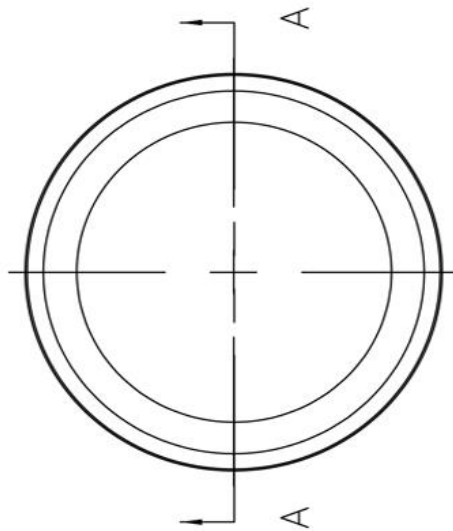
Angle: 38°

Material: Borosilicate glass



Brief Introduction:

This product is used for the high-bay lighting and other purpose with the 30W~100W integrated chip



➤ Product Detail



➤ More Features

LUMINAIRE PHOTOMETRIC TEST REPORT

Test:U:50.12V I:0.5851A P:29.33W PF:1.000 Freq:0Hz Lamp Flux:4115.4x1 lm		
NAME: 78-52 (CLL046) 2016.3.29	TYPE:	WEIGHT:
SPEC.:	DIM.:	SERIAL No.:
MFR.:	SUR.:	Shielding Angle:

DATA OF LAMP		PHOTOMETRIC DATA			
MODEL	CLL046 3000K	Imax (cd)	6624	S/MH (C0/180)	0.67
NOMINAL POWER (W)	30	LOR (%)	96.0	S/MH (C90/270)	0.51
RATED VOLTAGE (V)	50	TOTAL FLUX (lm)	3950.1	η UP, DN (C0-180)	0.6, 53.0
NOMINAL FLUX (lm)	4115.4	CIE CLASS	DIRECT	η UP, DN (C180-360)	0.5, 41.9
LAMPS INSIDE	1	η up (%)	1.1	CIBSE SHR NOM	0.50
TEST VOLTAGE (V)	50	η down (%)	94.9	CIBSE SHR MAX	0.60

